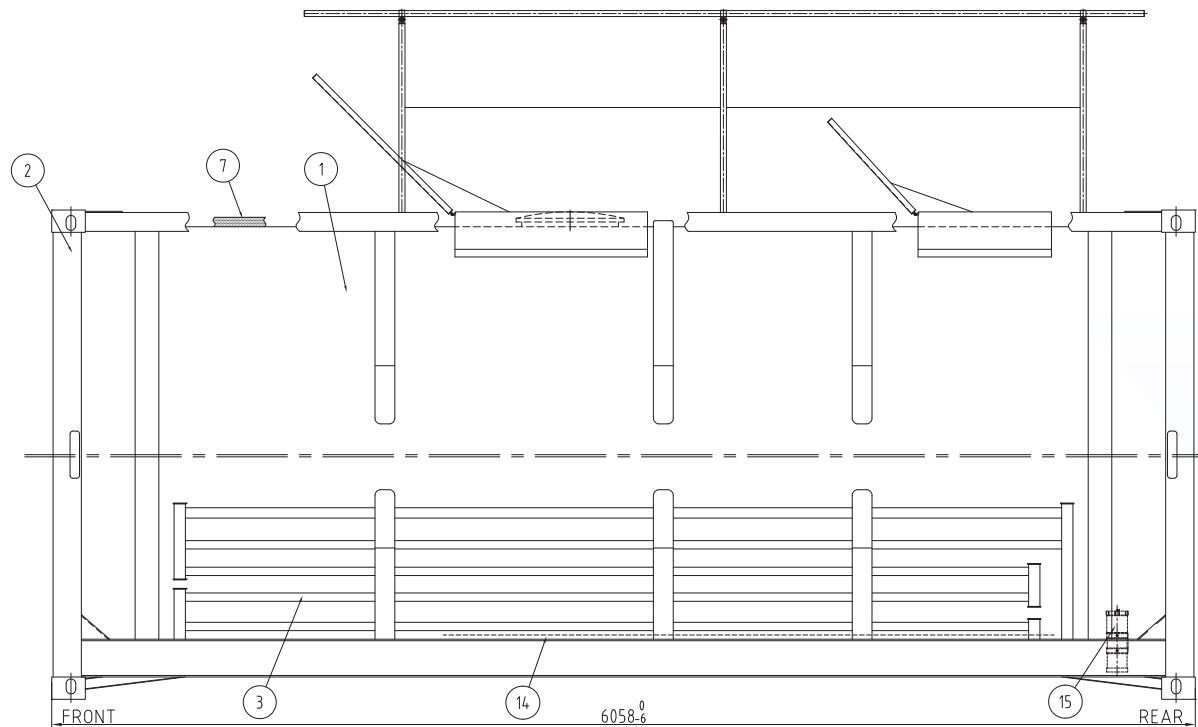
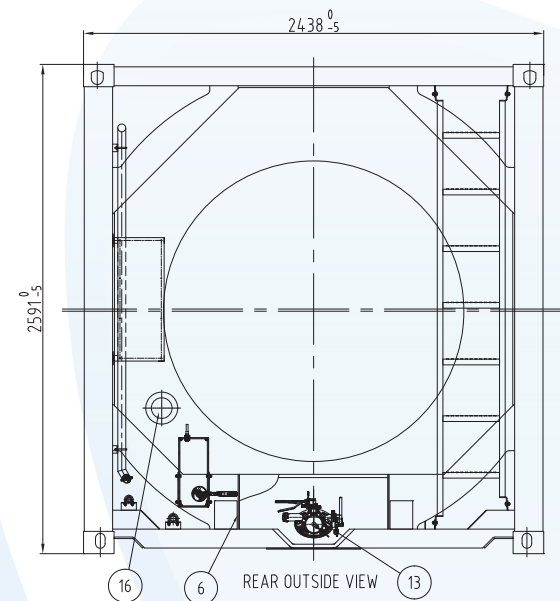


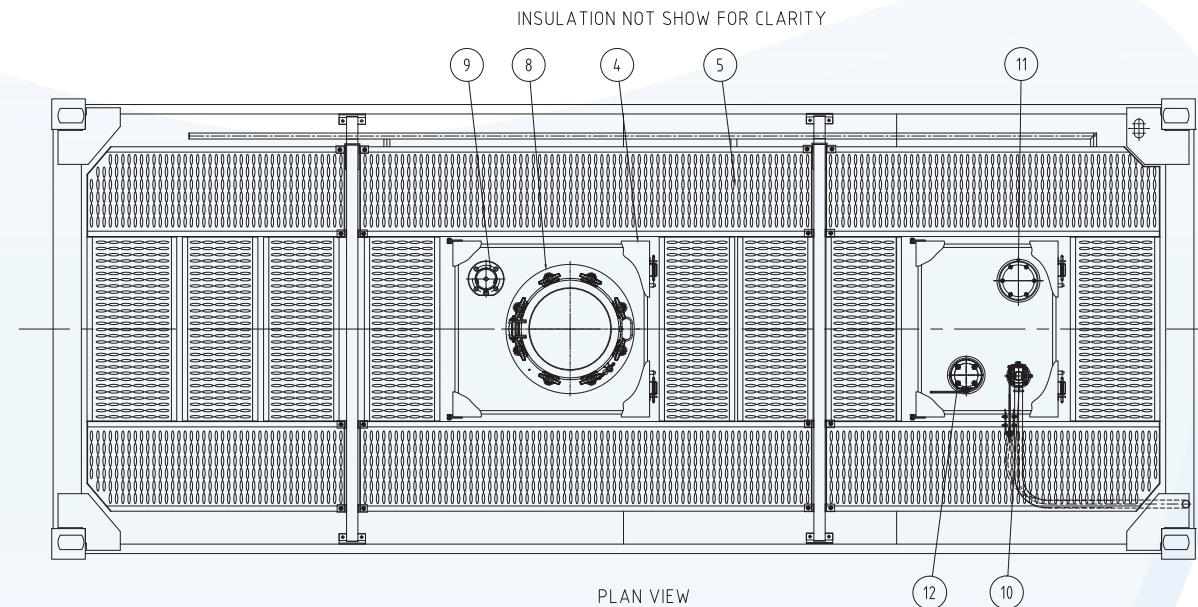
FRONT OUTSIDE VIEW



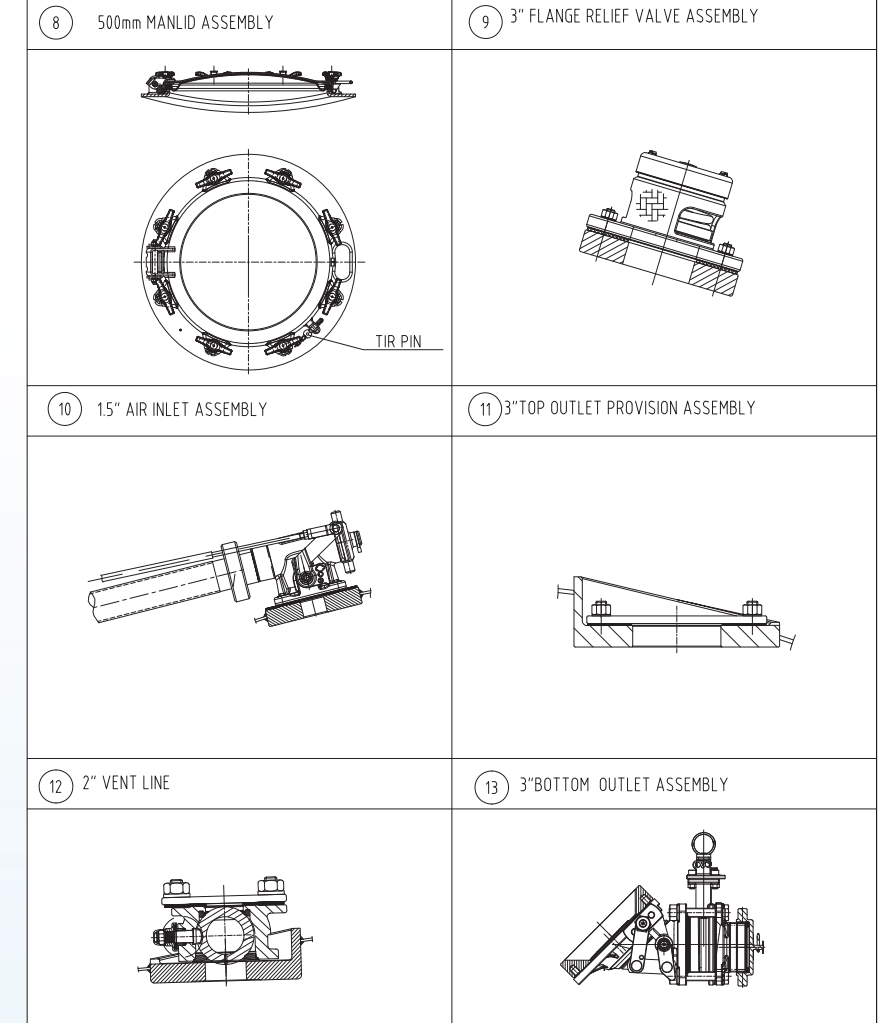
SIDE ELEVATION



REAR OUTSIDE VIEW



PLAN VIEW



SPECIFICATION

DESIGN STANDARD AND CODE:	ASME VIII Div-1 (NCS) & EN 14025 where applicable IMDG/ADR/RID/US DOT(CFR49)-UN Portable tank T11, ADR/RID-L4BN, TIR, UIC, CSC, TC, ISO 1496-3 where applicable	CONTAINER SIZE:	6058mm(L)x2438mm(W)x2591mm(H)
CAPACITY(-1.5,+2%):	26000 L / 6870 US gallons	TANK INSIDE SIZE:	φ2414 mm(I/DA) x 6020 mm(L)
TANK M.A.W.P:	4.0 bar / 58.0 psi	TANK RADIOGRAPHY:	Shell: spot (Including all 'T' Joints) Ends: full (100%)
TANK TEST PRESSURE:	6.0 bar / 87.0 psi	JOINT EFFICIENCIES:	Shell: 0.85(ASME VIII) / 0.8(EN 14025) Ends: 1.0
TANK EXTERNAL PRESSURE:	0.41 bar / 5.9 psi	MAX. PERMISSIBLE GROSS MASS:	39000 kg 85980 lbs
LEAKAGE TEST PRESSURE:	1.0 bar / 14.5 psi	TARE WEIGHT(±3%):	3780 kg 8335 lbs
VESSEL DESIGN TEMPERATURE:	-40°C TO +130°C	MAX. PAYLOAD:	35220 kg 77645 lbs
TANK SHELL MATERIALS:	SANS 50028-7 14402 or equivalent to 316L. C≤0.03%. Cold rolled 2B finish	SHELL INSULATION:	50mm ROCKWOOL ON SHELL WHERE POSSIBLE
TANK HEADS MATERIALS:	SANS 50028-7 14402 or equivalent to 316L. C≤0.03%. Hot rolled, polished	ENDS INSULATION:	ROCKWOOL, THICKNESS TO SUIT THE SHAPE OF END
CORROSION ALLOWANCE:	SHELL: 0.22mm / ENDS: 0.2mm	SHELL CLADDING & COLOUR:	18mm GRP WHITE (RAL9010)
STEAM TUBE M.A.W.P:	6.0 bar / 87.0 psi	ENDS CLADDING & COLOUR:	2.0mm GRP WHITE (RAL9010)
STEAM TUBE TEST PRESSURE:	9.0 bar / 135.0 psi	CLASSIFICATION SOCIETY:	LR

ISSUE	DATE	MODIFY DESCRIPTION	DRAWING BY
G	22,Mar.2019	Item4.3.The ball valve change to 2" dual BSP/BSP.	Cen Ai
F	12,Mar.2019	Item4.3: Change the 2" low profile weld-in flange with 2"-1.5" adapter flange to the 1.5" low profile weld-in flange.	HouCheng
E	05,Mar.2019	Item4.3: Change the 1.5" low profile weld-in flange to 2" low profile weld-in flange with 2"-1.5" adapter flange. Item4.4: Change top loading assembly to top discharge provision. Item6.2: Painting ladder to frame color.	HouCheng
D	22,Feb.2019	Item4.3: Change the top outlet provision to top loading assembly. Item4.4: Change the spare provision to vent line.	HouCheng
C	19,Feb.2019	Change the walkway from A type to full type.	HouCheng
B	17,Feb.2019	Change the position of air line and 2" spare provision.	Kevin
A	21,Sep.2018	New drawing.	Kevin

ITEM	DRAWING NO.	ENGLISH/CHINESE NAME	DESCRIPTION	QTY	MATERIAL	WEIGHT	NOTE
16		THERMOMETER	-40℃ ~+160℃	1			
15		DOCUMENT HOLDER	φ110mm x 310mm	1			
14		REMOTE CLOSURE		1			
13		BOTTOM OUTLET ASSEMBLY	3"BSP	1			
12		VENT LINE	2"Flange	1			
11		TOP OUTLET PROVISION ASSEMBLY	3"Flange	1			
10		AIR INLET ASSEMBLY	15"	1			
9		FLANGE RELIEF VALVE ASSEMBLY	3"Flange	1			
8		MANLID ASSEMBLY	500mm	1			
7		INSULATION AND CLADDING ASSEMBLY		1			
6		BOTTOM TRAY ASSEMBLY		1			
5		WALKWAY ASSEMBLY		1			
4		SPILLBOX ASSEMBLY		1			
3		HEATING & VACUUM RING ASSEMBLY		1			
2		FRAMEWORK ASSEMBLY		1			
1		VESSEL ASSEMBLY		1			

TANKCON Sales & Rental Edisonweg 7-19 | 3208 KB Spijkenisse | The Netherlands
Email: sales@tankcon.com | T +31 (0)181 76 91 48 | T +31 (0)6 52 63 63 70

DESIGN	Cen Ai	SCALE		NAME	General Drawing	DWG. NO.	040-00327G
CHECK	Robin	MATERIAL		DESCRIPTION	26cbm 6058mm(L)x2438mm(W)x2591mm(H)	ISSUE	G
REVIEW		WEIGHT				SHEET NO.	1/1
DRAWING BY		DATE	22,Mar.2019				